

## SKI CHALET



### CHALET AIGUILLE BLANCHE BY CITTOLIN POLLI & ASSOCIÉS SA

**Location:** Verbier, Switzerland

**Date Completed:** 2015

**Architect:** Cittolin Polli & Associés SA

**Interior Designer:** CP Design

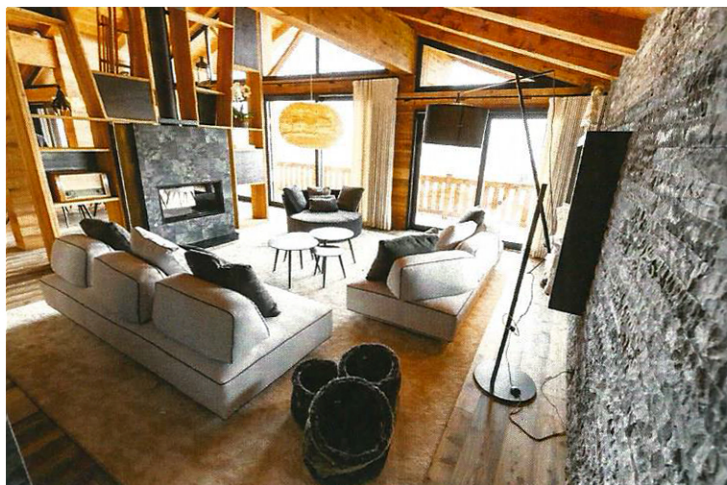
**Developer:** Cittolin Polli & Associés SA

**Construction Company:** Cittolin Polli & Associés SA

Chalet Aiguille Blanche represents contemporary architecture, designed with quality materials, able to provide a beautiful panorama of the Swiss Alps. This chalet was built by the architectural firm Cittolin Polli & Associés SA and underwent partial renovation in 2015. The renovation redefined the space to offer an extra bedroom and a re-organisation of the master bedroom, guest bedroom and fitness room.

This intervention has also helped to give a particularly poetic and audacious spirit in keeping with the lifestyle and the spirit of the customers. Additionally, this chalet is punctuated by a soft mix between the vernacular and the design, the raw and local materials are awakened by touches of design, while being worked in an innovative way. In the chalet, it is possible to admire true life size pictures, creating the effect of walls becoming alive to tell their story in each room.

The mirrors play with the light and reflections of the images in order to give perspective and a sense of space. It is possible to understand that the walls are all specifically chosen according to the spaces, vernacular materials have been used so as to work in an innovative way.



### GRIZZLY BY MICKAËL HOFMANN IMMOBILIER SÀRL

**Location:** Crans-Montana, Switzerland

**Date Completed:** 1 st June 2019

**Interior Designer:** Mickael Hofmann

**Developer:** Mickael Hofmann

**Construction company:** Mickael Hofmann

The interior design needed to respect the warm character of the mountain chalets with a touch of modernity because of its furnishing. A similar guideline was chosen for the whole chalet, in order to create a harmony and sobriety, leaving more space for interior design. It has been designed in a contemporary style.

The lounge, with its sofas in light colours, brings a certain idea of lightness and softness, which contrasts with the character colder and harder of the stone. A huge semi-opened bookshelf in wood and metal, including the chimney, created two spaces between the living room and the kitchen.

The kitchen combines modernity with an island with anthracite gloss painted faces and the traditions with wood on the back cover. Original tapestries, in shades of grey or cream, contrast with the predominance of wood and bring a touch of lightness. The bathrooms floorings have been treated with two materials, particularly the tiling, in order to give a raw look of the mountain stone and wood.

The chalet is located within a greenery environment with forest and lake, facing the Alps.